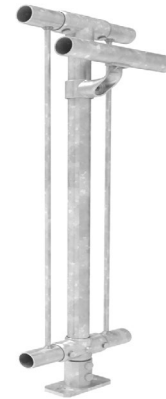
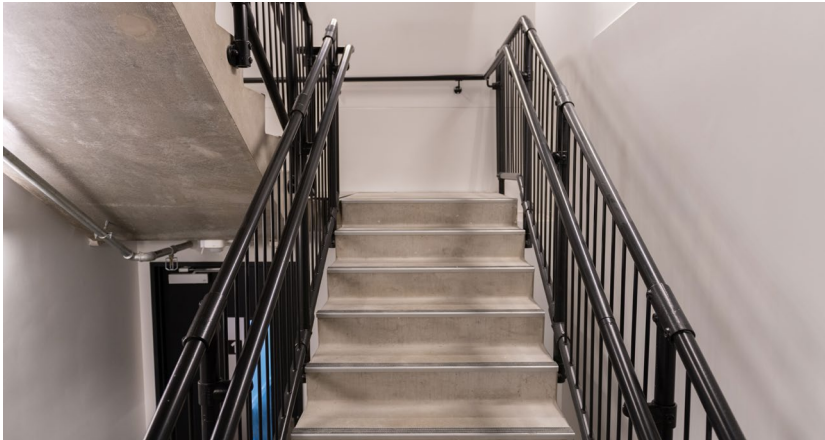


## Balustrade / Single Offset Handrail

For level and stair applications above one metre



### Key features

- › Modular flexibility
- › No-weld assembly
- › Flat pack delivery
- › Reduced corrosion
- › Colour options
- › Available ex-stock
- › BIM & CAD Support

### Applications suited to

- › Retaining walls and car parks
- › Access ramps and stairs
- › Accommodation units
- › Sporting facilities and stadiums
- › Public transport and sightseeing
- › Fire and access stairs
- › Footbridges and culverts
- › Loading bays and mezzanines
- › Refer to applicable NZ Standards and Building Codes.

### Specification Summary

Supply and install the proprietary CB40 barrier system to substrate according to Moddex specifications, or by a Moddex accredited installer.

### Technical Data

#### Material

Stanchions, rails & balustrades	Steel/grade C250 & 350
Clamp fittings	Malleable Cast iron
Clamp locking screws	Stainless Steel (304)

#### Protective coating

Stanchions, rails and balustrades	G390 Hot-dip Galvanize (min 390g/m <sup>2</sup> )
Clamp fittings	Hot-dip Galvanized with patented protective coating on threads
Optional	Powder coating and paint specs*

\*The standard process for Powder Coated and Painted handrail products is as follows: black steel is used for fabrication and then hot-dipped galvanized. Product is then de-gassed and pre-treated before powder coating is applied on top of galvanising.

### Dimensions

Variable depending on application/code

#### Stanchions

Diameter	48.3mm OD 41.9mm ID
Nominal Thickness	3.2mm - 4.0mm (loading dependent)

#### Rails

Diameter	48.3mm OD 41.9mm ID
Nominal Thickness	3.2mm

#### Balustrade

Baluster	12mm
Baluster Centres	100mm (88mm gap)
Heavy Duty Baluster	16mm
Baluster Centres	100mm (84mm gap)

#### Clamp fittings

Thickness	5.0mm (approx)
Locking screws	M12 x 1.75 x 11mm - DEXX <sup>®</sup> Drive

### Weight

Variable depending on application/code

Stanchion with clamps	7.2 to 8.0kg
Rail @ 6.0m	21.6kg
Balustrade Panel @ 2.0m	29kg

### Fixings

Stanchion attachment to

Concrete	M12 galvanized mechanical concrete anchor
Structural steel	M16 galvanized high tensile bolt set
Timber	Stainless or galv coach screws

\*Other Fixing options are available on request

### Compliance

Moddex CB40 balustrades are designed and manufactured in accordance with the New Zealand Building Code D1 Access Routes and F4 Safety from Falling. Galvanized to AS 4792 and AS/NZS 4680:2006 (where applicable).

### Testing

Testing and performance based on requirement of Standard AS/NZS 1170.1 Clause 3.6 Table 3.3. Static load testing has been performed and independent testing has been carried out to confirm the suitability of the Moddex system in maritime conditions.

### Warranty

5 years from date of purchase subject to correct installation, use and maintenance in accordance with manufacturer's specifications and recommendations, unless otherwise negotiated at the time of purchase.

### Basis of Design

When designed as per the Moddex PS1

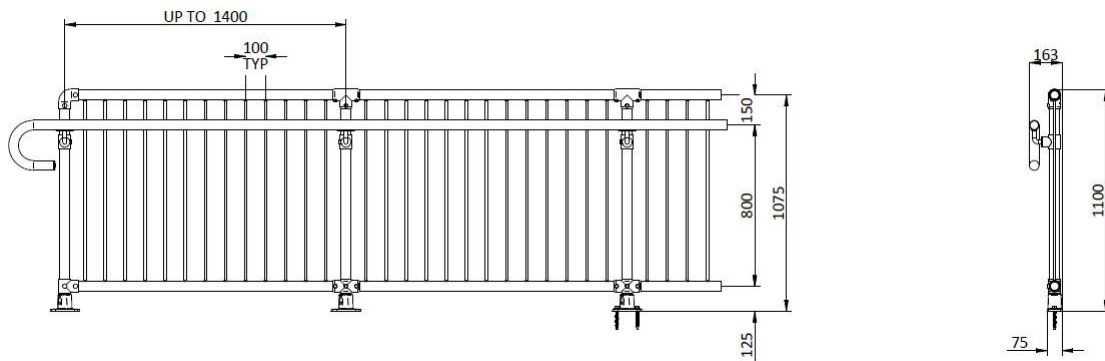
1. Design Life: 50 years minimum
2. Building Occupancy: A, B/E & C3
3. Loadings: AS/NZS 1170.1:2002 - Table 3.3 AS 1657:2013 - CL6.1
4. Live Loadings: Line: 0.75 kN/m  
Concentrated: 0.6 kN  
Infill: 1KPa/0.5KN

### BPIR

BPIR, set new minimum requirements for the level of information required about building products supplied to the New Zealand market. Moddex is committed to meeting these requirements - download the latest information here:

<https://moddex.com/resources/downloads/#bpir-sheets>

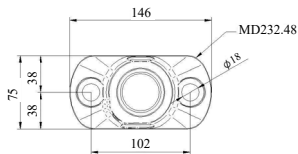
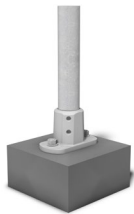
## Technical Information



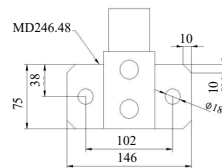
## Mount Dimensions

### FIXING TO CONCRETE

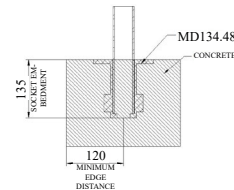
T2 - Top Mount (2 Fixings)



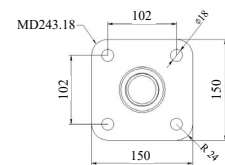
F2 - Face Mount (2 Fixings)



CD - Cored Mount

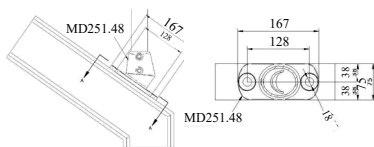


T4 - Top Mount (4 Fixings)

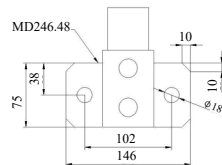


### FIXING TO STEEL

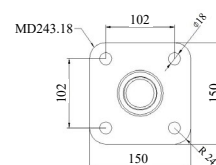
T2 - Top Mount (2 Fixings)



F2 - Face Mount (2 Fixings)

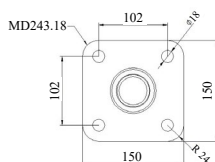


T4 - Top Mount (4 Fixings)

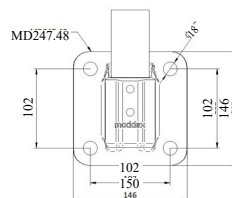


### FIXING TO TIMBER

T4 - Top Mount (4 Fixings)



F4 - Face Mount (4 Fixings)



## Standard References

### New Zealand Building Code

- As noted in NZBC Clause D1 Access Routes, handrails shall be provided on both sides of accessible stairways and accessible ramps.
- When a ramp, stair or landing is situated so that a person could fall 1m or more, then a barrier shall be provided that meets the requirements of NZBC Clause F4 Safety from falling.

[DOWNLOAD OUR GUIDE TO HANDRAIL & BALUSTRADE COMPLIANCE HERE](#)

**Important Note:** Failure to supply and/or install proprietary product in accordance with above Standards and codes and the Moddex PS1, voids complete system certification and/or warranty.

Designed and manufactured by Moddex. ©Moddex Group. All Rights Reserved.

For information or technical support please contact us

T 1800 663 339 (AU)

T 0800 663 339 (NZ)

moddex.com